



alphapointe™
Vision. For Life.

Life Services

[Our Story](#)

Why Alphapointe?

- Not For Profit (501c3)
- 100 years + (1911)
- Catherine Hale
- Empowerment
- One of the largest employers of the blind (75% of staff)
- Manufacturing Wing
- KC & NYC locations
- Fundraising ability 'Boots & Pearls'
- Comprehensive Adult & Youth Services
- An extension of state and private agencies



Why Alphapointe?



VALUES

PASSION FOR THE MISSION

Our commitment to empowering individuals with vision loss “fuels” our every endeavor.

INNOVATION

We embrace change, pioneer new approaches, and redefine what’s possible.

PURSUIT OF EXCELLENCE

We foster a culture of high expectations, quality, and continuous improvement.

STEWARDSHIP

We safeguard and responsibly manage our resources.

Meet the LVC Team

DR. ANITA SAHNI



OT/OTA SERVICES
SHANNON FUGATE, MSOT, OTR/L |
BECKY DUMSKY, COTA/L



VT

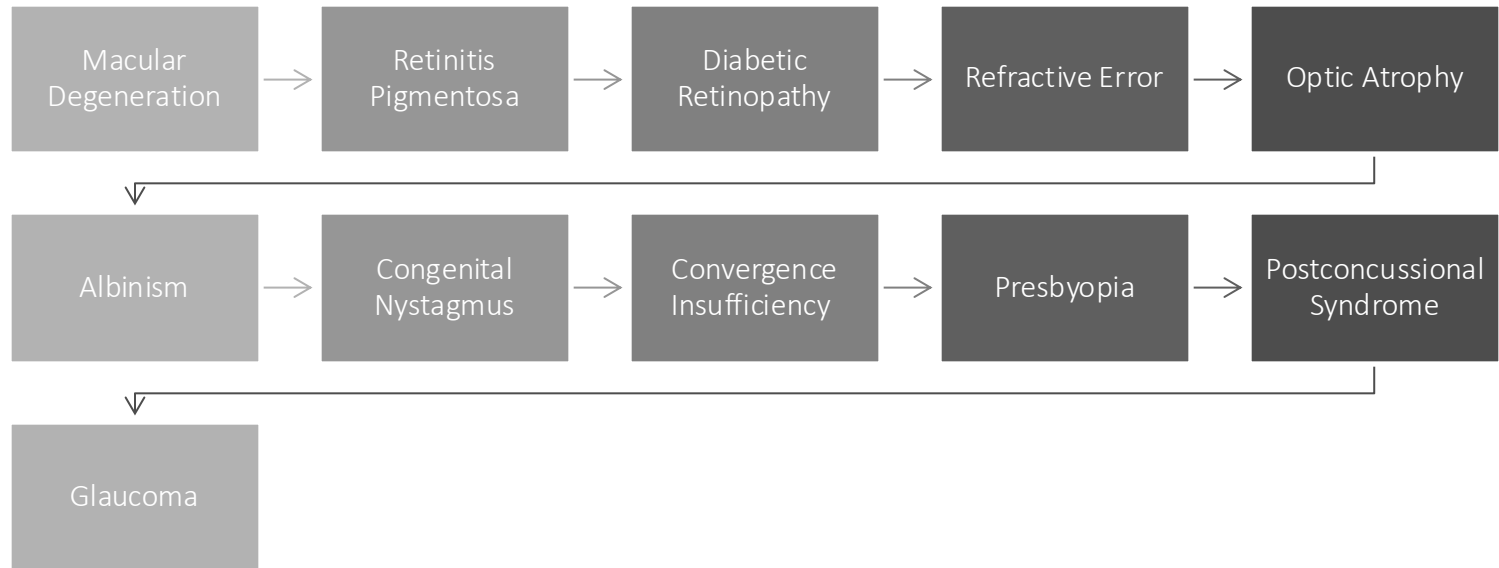
KRISTEN MARQUIS,
COTA/L



Why Refer?



1. Does your patient have a Visual Impairment?
2. What signs and symptoms are they displaying?
3. What interventions have they gone through to this point?
4. Do they have a family history of visual impairment or blindness?
5. Have they experienced a significant MOI?
6. **STRONG REFERRAL LOOP**



Most common diagnosis we see?

Example conditions we see

What It's Like



This is how a street scene looks with normal vision.



Example of a Hemianopia.

Example conditions we see continued

What It's Like



This is how a street scene looks with normal vision.



Example of a Macular Degeneration

Service options



- **For Adults:**

- Referral for OT Evaluation & Functional Plan of Care
 - Promoting Independence
 - Home health care
 - Demonstrate and distribute resources
 - >55/KS residents may possibly be eligible for equipment at no additional cost
- Routine follow ups with Dr. Sahni
- Referral for Vision Therapy

Invitation to **ALPHAPOINTE** support programs

- Determine eligibility for adult services (if legally blind) through RSB/Voc Rehab – assist with application
- **For Youth:**
- Every option for Adults and more... **Adventure Camp, Technology Camp, STEP, PREP, EYE Programs**

Testimonials | Case Studies

- Male, Middle aged
 - Diagnosis - Lebers Optic Neuropathy
 - Employment & Personal Goals:
 - Increase computer competence
 - Cell phone tasks
 - Reading personal mail
 - TV viewing
 - Appliance management
 - Remain vital to his employer
 - Training was provided in all the above areas
 - "The most helpful part of training was learning accessibility options on a computer in order to remain a valuable worker"
- Female, Senior, Macular Degeneration
 - >30 years as an educator, >20 years as an editor
 - Passion for art through words
 - Personal goals:
 - Continue to read
 - Identify items in cabinets and drawers
 - Make phone calls
 - Improve daily task abilities
 - Received a CCTV through donation
 - Technical training provided
 - Labeled doors and cabinets
 - Resulted in increased confidence in daily tasks and able to continue her passion for reading

Insurance In Network

KC OFFICE

- ❖ BCBS
- ❖ Medicare/Advantage
- ❖ Work Comp (pending approval)
- ❖ Humana
- ❖ MO Medicaid (MO Healthnet only)
- ❖ UHC
- ❖ Cigna
- ❖ Aetna
- ❖ Tricare
- ❖ Geha
- ❖ First Health
- ❖ RSB

OP OFFICE

- ❖ BCBS
- ❖ Medicare
- ❖ Work Comp
- ❖ Vocational Rehab
- ❖ Humana (June 1st 2024)

*All other plans are out of network. Please call us at 816-237-2020 if any questions.



How to refer?

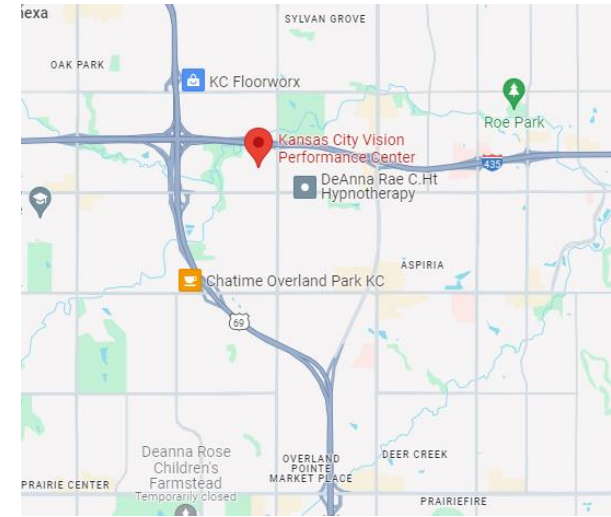
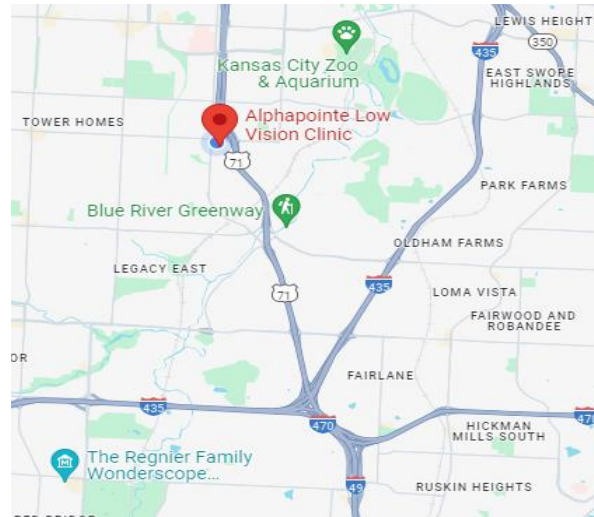
LOCATIONS:

Low Vision Clinic

7501 Prospect
Kansas City, MO 64132

KC Vision Performance

10875 Grandview Dr #2260
Overland Park, KS 66210



Call for an appointment: Ph: (816)237-2020 or Fax a Referral to: (913)469-8688

For referrals, please include demographics, last office visit notes and eye exam report, and any insurance information.

Comprehensive Rehabilitation Services

Our Instructors

Emily Haapala
(Braille &
Academics)



Alyssa Lurie
(O&M)



Lacey Webb
(AT/Lead
Instructor)



Amber Lee
(ADL/COTA)



Adaptive Technology (AT)

Lead instructor: lwebb@alphapointe.org

Meet: Lacey Webb

- State-of-the-art education center
- IOS & Microsoft friendly
- Electronic Magnification
- Applications used in today's workforce
- Screen reading software
- Audio reading equipment

- With Alphapointe since June of 2023.
- Previously worked in the Blue Springs School District as a Teacher for Students with Visual Impairments.
- Bachelor's degree from the University of Missouri-Columbia in Special Education.
- Master's degree at Vanderbilt University in Special Education with an emphasis in Visual Impairments.
- Teacher Visually Impaired Cert (TVI)
- Best part of Lacey's job is "introducing technology to my clients that they never knew existed!"
- When not at Alphapointe, Lacey "enjoys reading, playing music, hiking, spending time with my family, and hanging out with her two cats."



Orientation & Mobility

alurie@alphapointe.org

O&M

- White Cane training
- Indoor & Outdoor skill training
 - Navigation
 - Residential & Commercial communities
 - Parks & Recreational areas
- Public Transportation training



Meet: Alyssa Lurie

- Been with Alphapointe rehabilitation team for 2 years.
- Certified Orientation and Mobility Specialist (COMS) for 5 years.
- Master's degree in orientation and mobility from Western Michigan University in 2018.
- Alyssa enjoys the spirit of teamwork and collaboration built from the rehabilitation team.
- Her favorite part of working with clients is their “Ah-ha” moment that leads them feeling empowered to travel independently.
- When she's not at Alphapointe, you'll find Alyssa either walking her Wheaten terrier dog, Jade, practicing yoga at a yoga studio, or trying to make a recipe she found on Pinterest.



Activities of Daily Living

alee@alphapointe.org

ADL

- ❖ Independent skill training
- ❖ Personal care
- ❖ Social interaction
- ❖ Food prep & culinary skills
 - ❖ Via software/app technology
- ❖ Appliance competency
- ❖ Diabetes management



Meet: Amber Lee

- ❖ Certified Occupational Therapy Assistant (COTA/L)
- ❖ Activities of Daily Living (ADL)
- ❖ Graduated from the MCC - Penn Valley OTA Program in 2021.
- ❖ *Diabetes Management Certification.
- ❖ The geriatric population holds a special place in my heart because I learn about many stories of a simpler time.
- ❖ Passionate about helping others, especially when she can be a part of their journey, increasing their independence and quality of life.. When not at Alphapointe, Amber love to be outside in nature, spend time with loved ones, lose track of time in my art room, and journal.
- ❖ Played Basketball, *Volleyball, and Soccer.





(Braille & Academics)

Braille training includes functional Braille for use around the home and office as well as contracted Braille for those looking for a more comprehensive reading solution. Instruction to help current Braille readers transition to Unified English Braille is also available. Academic training includes refreshers in professional writing, on the job reading, and math skills as needed for vocational placement.



Meet: Emily Haapala

- Certified Vision Rehabilitation Therapist/Orientation and Mobility Specialist.
- Graduate of Northern Illinois University with my M.S.Ed. in Visual disabilities.
- Braille and Academics Instructor, with qualifications to teach O&M, AT and ADL.
“Unicorn”
- Enjoys exploring new places in the city, especially coffee shops.
- Plays musical instruments.
 - Violin for 10 years
 - Recently started to learn Cello
 - “Classical music is just my focus for my instruments though, my favorite genre of music is rock.”

ehaapala@alphapointe.org



Important Details

- Single Service vs. Full Service
- Initial evaluation; followed by training
 - Comprehensive assessment
 - Customized plan (avg. 8-16 weeks)
 - Continuity & transparency with counselors
- WOWI Assessment
- Real life experiences, off campus activities
“Adjusting to Blindness” coming soon...



Additional considerations:

- Can accept referrals from any state
- Transportation & Lodging built into the program
- Provide free cane repair
- We have a community store – **Connecting Pointe**
- **Exploring additional services, which include:**
 - Counseling/Mental Health
 - Clinical Research
 - Physical Fitness
 - Diet & Nutrition
 - Financial Planning



Free Group Classes (3pm-4pm)

AT

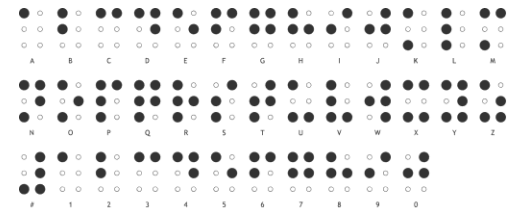
- **Week 1:** Keyboarding/intro to Jaws and ZoomText
- **Week 2:** iPhone and Android vision applications
- **Week 3:** iPhone and android accessibility (voiceover, settings, etc.)
- **Week 4:** Open Session/Q +A (people come to discuss individual questions)

ADL

- **Week 1:** Labeling, organization/identification techniques
- **Week 2:** Improving safety and confidence in the kitchen
- **Week 3:** Phone accessibility; use of phones (apps) for daily functional tasks
- **Week 4:** Open discussion, Overview, Q&A

Braille

- **Week 1:** Intro to Braille letters a-j and numbers
- **Week 2:** Braille letters k-u
- **Week 3:** Braille letters u-z
- **Week 4:** Braille labeling, writing in braille, Braille in the community



Connecting Pointe

Visual Aides	Mobility Aides	Home & Appliance	Entertainment
Magnifiers	Mobility Resources	Kitchen Aides	Board games
Filters	Cane Supplies	Computer Equipment	Cards
Bioptics, Filters	Academic resources	Health supplies	Physical Games
Lighting	Signature Guides	Diabetes management tools	Brain Games
Lighting accessories		Beauty Supplies	
Smart Readers		Phones	



Started April 29th...



Job Placement Specialist

- ✓ Job Analyst, Coach, and Recruiter.
- ✓ Counsels' clients and agencies on orientation and onboarding process.
- ✓ Liaise between Alphapointe and various agencies.
- ✓ Assess aptitude, interests, and past achievements to maximize agency interest and inevitable placement.
- ✓ Collaborates with CRS instructors and agency resources in implementation of employer needs.
- ✓ Network with agencies, organizations, and employers of all types.
- ✓ Networks with counselors, stakeholders, and leadership.
- ✓ Is inclusive, stable, aware, and constantly exploring future opportunities.



Additional Services and Programs

- STEP
- PREP
- Adventure Camp
- Technology Camp
- Expanded Youth Services (E.Y.E):
 - Kids in the Kitchen
 - Kids in the Grocery Store
 - Alpha Art
 - Abacus Bee
- *Free Adult Support Groups (includes virtual options)
- Transportation built into program



Contact Information

- If you have any additional questions, or have parents who are interested in learning more about our youth programs, please contact Alex VanDyke at:

avandyke@alphapointe.org

816-237-2038

Inevitable Initiatives

- Adjustment to Blindness Training
- Financial/Benefit Counseling
- Increased Social Support
- Individual/Group Mental Health Support
- Diet & Nutrition Training
- Physical Fitness Training

Why We Serve

- Network & build relationships within the community
- Optimize **Service** that is bigger than _{us}
- Tactfully leverage creative empowerment
- Institutionalize stewardship & leadership
- Celebrate diversity w/technology & aptitude
- Explore endless opportunities



We look forward to partnering with you!



alphapointe™

Thank You!

Vision. For Life.

Additional Contact Information:

- **Howard LaRue** Director of Rehabilitation Services
- O: 816-237-2047 E: hlarue@alphapointe.org
- **Gina Gowin** Chief Dev. & Program Officer
- O: 816-237-2025 E: ggowin@alphapointe.org

Learn a little more about us:

- [Meet Cameron Black](#)
- [PBS Commercial](#)

